

# Brookstone<sup>®</sup>

## Smart Bulb

WHITE & **COLOR** CHANGING

### USER MANUAL



FCC ID:2AJ3WEBEBAW435



**RoHS**



#### FCC Statement:

1. This device complies with Part 15 of the FCC Rules. Operation is subject to the following two conditions: (1) this device may not cause harmful interference, and (2) this device must accept any interference received, including interference that may cause undesired operation.

Caution: The user is cautioned that changes or modifications not expressly approved by the party responsible for compliance could void the user's authority to operate the equipment.

Note: This equipment has been tested and found to comply with the limits for a Class B digital device, pursuant to part 15 of the FCC Rules. These limits are designed to provide reasonable protection against harmful interference in a residential installation. This equipment generates uses and can radiate radio frequency energy and, if not installed and used in accordance with the instructions, may cause harmful interference to radio communications. However, there is no guarantee that interference will not occur in a particular installation. If this equipment does cause harmful interference to radio or television reception, which can be determined by turning the equipment off and on, the user is encouraged to try to correct the interference by one or more of the following measures:

- Reorient or relocate the receiving antenna.
- Increase the separation between the equipment and receiver.
- Connect the equipment into an outlet on a circuit different from that to which the receiver is connected.
- Consult the dealer or an experienced radio/TV technician for help.

2. This equipment complies with FCC radiation exposure limits set forth for an uncontrolled environment. This equipment should be installed and operated with a minimum distance of 20cm between the radiator and any part of your body.

For more products please visit [www.brookstone.com](http://www.brookstone.com)

## SPECIFICATIONS

Model: BKSBRGB-N

Bulb Type: A19

Socket Type: E26

Operating Voltage: AC120V

Power: 9W

Beam Angle: 220°

Lumen Flux: 800Lm

Watt Equivalent: 60W

Wireless type: Wi-Fi 2.4GHz

Wireless Standard: IEEE 802.11b/g/n

Lampholder: E26

Bulb Size: 108x60mm

## WARRANTY INFORMATION

One Year Limited Warranty.

Customer Service: [help@smartpointco.com](mailto:help@smartpointco.com)

The BROOKSTONE trademark, names and logos are owned by BKST Brand Holdings LLC ©2021. All rights reserved.

Manufactured, marketed and distributed by Smartpoint LLC, under license.

Amazon, Alexa and all related logos are trademarks of Amazon.com, Inc. or its affiliates.

Google, Android, Google Play and Google Home are trademarks of Google LLC.

App Store® is a registered trademark of Apple, Inc.

All trademarks and registered trademarks are property of their respective owners.

Made in China

©Smartpoint LLC,  
250 Liberty Street, Suite 1A  
Metuchen, NJ 08840

## FEATURES

- Wi-Fi remote controlled
- Changes to 16 million different colors
- Dimmable & Programmable with Schedule
- App and Voice Control
- Works with Hey Google or Amazon Alexa



**Items included in package:**  
Smart Bulb and User Manual.

# DOWNLOAD APP

1. Android™: download “Brookstone Smart” app on Google Play.
2. iPhone: download “Brookstone Smart” app from the App Store.

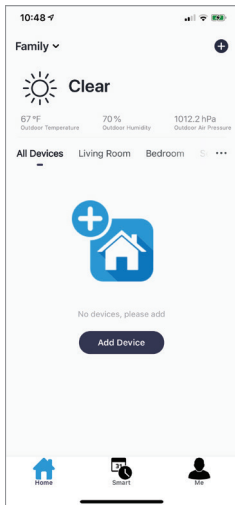
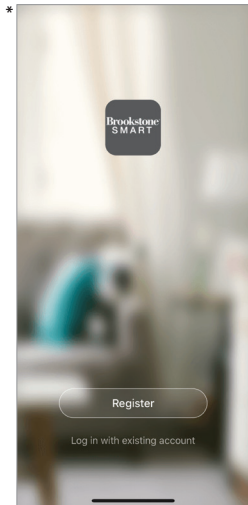


Brookstone Smart



# REGISTRATION AND LOGIN

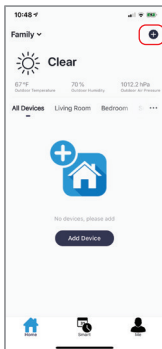
1. Run the “Brookstone Smart” app from your smart phone.
2. Register and login.



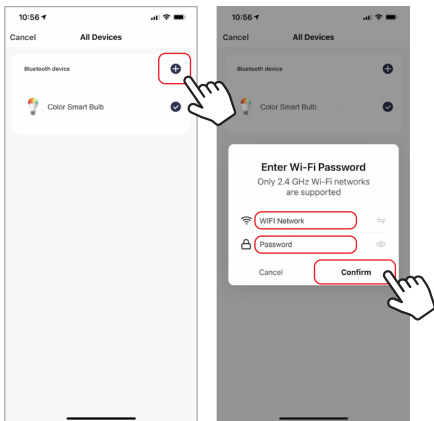
\*Screenshots may slightly differ from actual app.

# ADD DEVICE

1. Make sure phone is connected to your Wi-Fi network and that it is a 2.4GHz network and make sure Bluetooth is turned on.
2. Screw in the Smart Bulb into the light socket. Wait 5-7 seconds for light to blink rapidly. It is now in set up mode and you can proceed to step 3. To manually put it into set up mode, turn the light switch on/off about 4-5 times and then leave on. The light should then be blinking rapidly.
3. From the home screen of the App, press the (+) symbol in the top right corner.



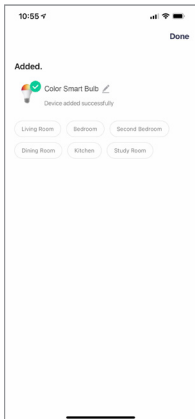
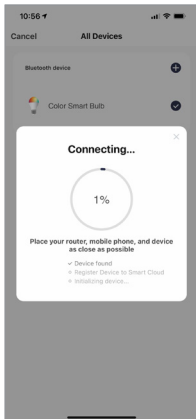
4. A pop up window will automatically appear asking to add the Smart Bulb. Press “Go to add”. On the next screen, click on the (+) icon.



5. Make sure your phone is connected to the Wi-Fi network that the device will be connected to. Enter your password for the correct Wi-Fi network and press confirm.



6. Connecting process will begin. Do not turn off the Smart Bulb or phone while connecting. Wait for connection process to complete.
7. Once device has been successfully added, name the device what you would like it to be called in the app. The Smart Bulb is ready for use.



# CONTROLLING THE DEVICE

There are three modes for the bulb.

**White Mode**, **Color Mode**, and **Scene Mode**. All of these modes can be found at the bottom of the app screen when the bulb is selected.

**White mode** makes the bulb white and you can adjust the brightness and color temperature.

**Color Mode** lets you change the color, brightness and color saturation of the bulb.

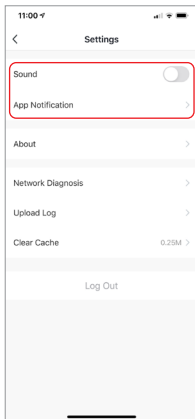
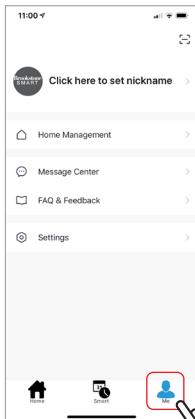
**Scene mode** has preprogrammed color settings to pick from.

You can also **set a schedule** for your smart bulb at the bottom right of the app screen.



# PUSH NOTIFICATIONS

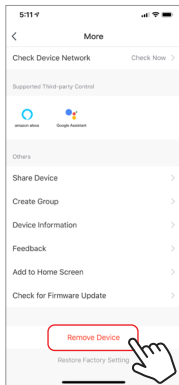
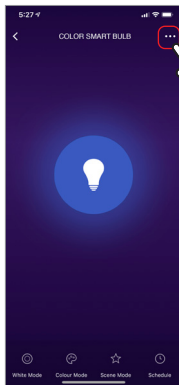
1. You can turn on/off notifications for all devices connected to app by clicking on the “Me” button at the bottom right of the screen.
2. Then click on “Settings” button. From there you can turn on/off all notifications.



# REMOVE A DEVICE / RECONNECTING TO A NEW WIFI NETWORK

If you need to change the WIFI network that your device is connected to, delete the device from the Brookstone Smart App and then start the set up process again when you are connected to the new WIFI Network.

1. From the home screen, click on the device you would like to remove.
2. Then click on the edit symbol on the top right of the screen.
3. From there you would then click the “Remove Device” button at the bottom of the screen.

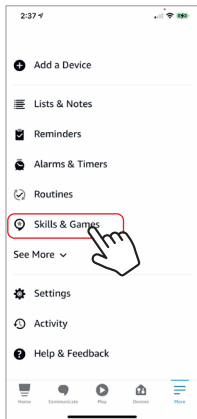
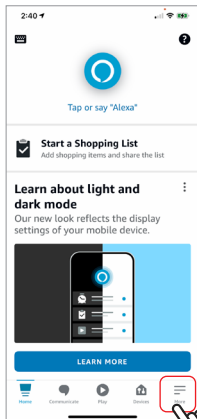


# How to control the Smart Bulb with Amazon Alexa



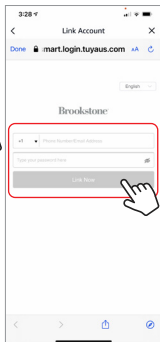
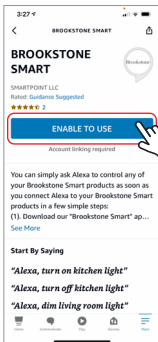
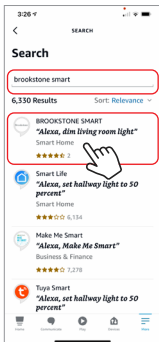
Please make sure that your Alexa app is connected to your Amazon Echo and both work together successfully on your Wi-Fi home network.

**Step A.** Log into your Alexa app, tap bottom right corner, and then tap “Skills & Games”.

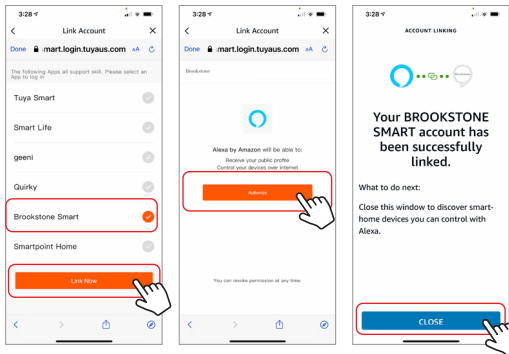


**Step B.** Type “Brookstone Smart”, find “Brookstone Smart” app in the search results and tap “enable to use”.

**Step C.** Enter your account info for the “Brookstone Smart” app, tap “Link Now”, then tap “Brookstone Smart” and tap “Link Now” again. On the next page press “Authorize” to link Brookstone Smart account to Alexa.



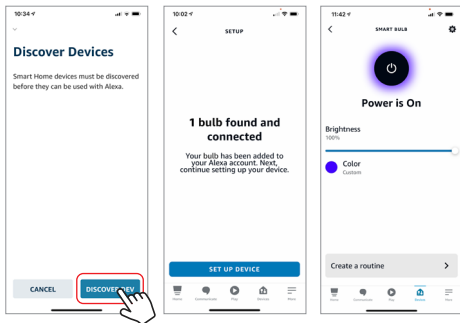
**Step D.** Once your Brookstone Smart account is successfully linked to Alexa, the next page will pop up. Tap "Close" at the bottom and then tap "Discover Devices" on the next page at the bottom right.



**Step E.** Wait a few seconds for Alexa to detect the Smart Bulb from the Brookstone Smart app and you will find the device named "Smart Bulb" has been paired to Alexa app from "Brookstone Smart" app. Follow the on-screen instructions to further set up the device.

The bulb will be named whatever you named it in the Brookstone Smart App.

After **Step E** is done, you can now control the Smart Bulb with Alexa app from the devices page.



**Step F.** Now you are able to control the Smart Bulb via Amazon Alexa with your voice.

Try these commands and see what happens by asking Alexa:

- Alexa, turn on “Smart Bulb”
- Alexa, turn off “Smart Bulb”

Note: The device name is the one you give to the smart bulb on “Brookstone Smart” app. Let’s name it “Living Room”.

For example, now you can say:

- “Alexa, make the Living Room Blue”,
- “Alexa, make the Living Room Red”, etc.

Any device you connect to the Brookstone Smart App should automatically be added to Alexa. If it does not add automatically, ask Alexa to discover devices.

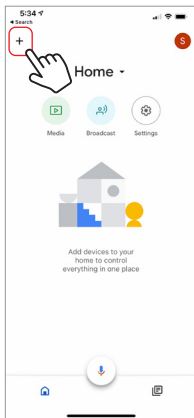


# How to control the Smart Bulb with Google Assistant

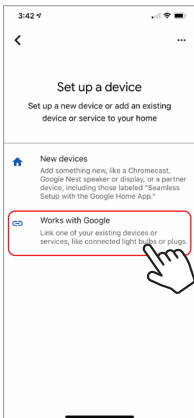
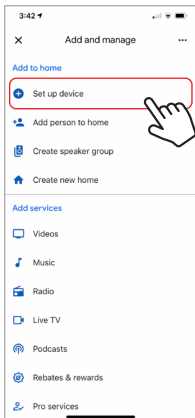
1. Pair Smart Bulb with Brookstone Smart App and name it with an easily recognizable name.
2. Download the Google Home App and register and log in with your Google Account info.



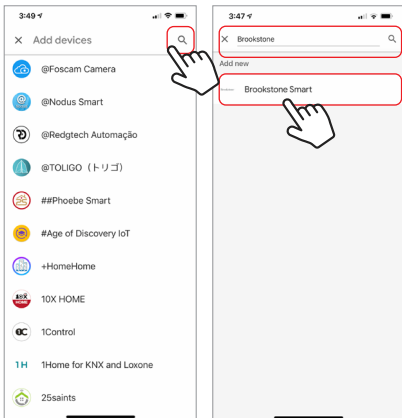
**Step A.** Once you are logged into your Google Home App, press the (+) icon in the top left hand corner.



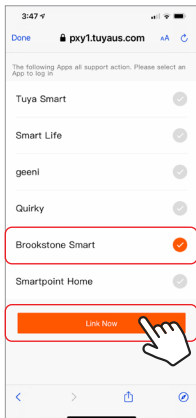
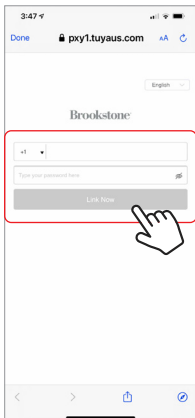
**Step B.** On the next page press “Set up device”, and then on the page after that select “Works with Google”.



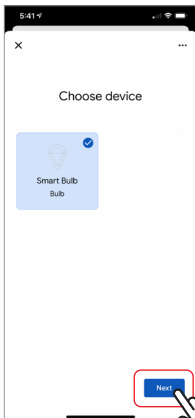
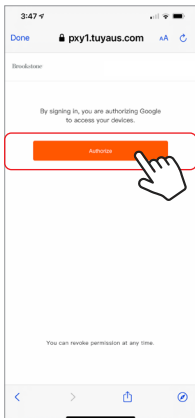
**Step C.** Press the magnifying glass icon to type in the app you would like to link to your Google Home account. In this case, type in “Brookstone Smart” and then select it from the list below.



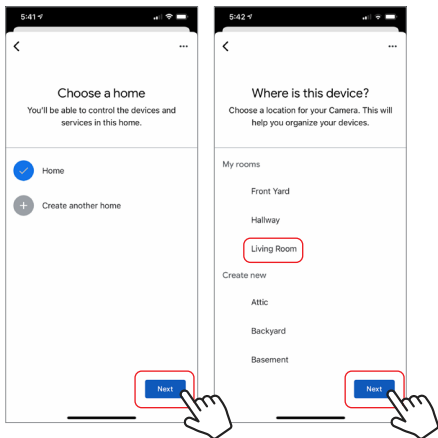
**Step D.** Enter your account info for the “Brookstone Smart” app, tap “Link Now”. On the next page select the correct app to link and then press “Link Now” again.



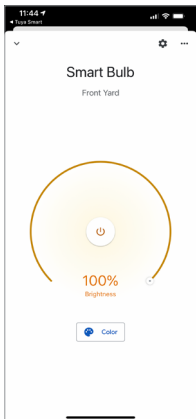
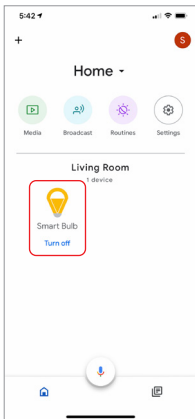
**Step E.** Tap “Authorize” on the next page to link your Brookstone Smart Account with Google Assistant. After that you will see any devices that are connected to your Brookstone Smart App. Choose the device you would like to add to the Google Home App and press “Next”.



**Step F.** Select the home you would like the device to be linked to and then select which room you would like the assign it to.



**Step G.** Your device is now linked to your Google Home App. You can now control it through the Google Home App on your phone or through a Google Assistant-enabled speaker.



**Step H.** You also are able to control the Smart Bulb via Google Assistant with your voice.

Just start with “Hey Google”.

“Turn on Smart Bulb”

“Turn off Smart Bulb”

Note: The device name is the one you give to the bulb on the “Brookstone Smart” App . Let’s name it “Living Room”.

For example:

“Turn on Living Room”

“Turn off Living Room”