

SMART P  **INT**

HD Rear View Mirror
Dash Cam



SPECIFICATIONS

Model: SPRVDASH

Image Sensor: HD CMOS image sensor

Viewing Angle: 120°

Video Resolution: 1280 x 960

Memory Compression Format: MJPG

Video Format: AVI

Photo Format: JPG

Standard Voltage: DC 5V

LCD: 2.4"

Memory Card: Max 32GB

Video Specifications: AVI

WARRANTY INFORMATION

One Year Limited Warranty.

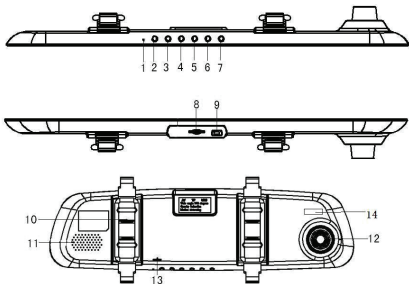
For Customer Service, email us at: help@smartpointco.com

SMART P  **INT**

Manufactured, marketed and distributed by Smartpoint LLC, under license.
All trademarks and registered trademarks are property of their respective owners.
Made in China

©Smartpoint LLC,
250 Liberty Street, Suite 1A
Metuchen, NJ 08840

PRODUCT CONFIGURATION



- | | |
|-----------------|-----------------------|
| 1. Mic | 8. Micro SD Card Slot |
| 2. Rec | 9. USB Charging Port |
| 3. Mode | 10. Back Clip |
| 4. Menu | 11. Speaker |
| 5. Down | 12. Camera Lens |
| 6. Up | 13. Reset |
| 7. Power on/off | 14. Fill-in Light |

Operating the Rear View Mirror Dash Cam

IMPORTANT NOTICE: Allow the device to charge 4 - 6 hours before using.

HOW TO CHARGE THE DEVICE USING YOUR COMPUTER

1. Plug the USB cable into the USB port on the device.
2. Plug the USB cable into the USB port on your computer or USB hub.
 - The blue and red indicator light will turn on while charging
 - The red indicator light will turn off when charging is complete

IMPORTANT NOTICE: Car cameras are designed to run off of constant power. The internal battery should not be relied upon for extended recording. The purpose of the battery is to make sure the most recent files are saved in case of an accident where the unit would normally lose power.

Charging

1. Insert the USB charger into the car charging port of the device.
2. Insert the car charger into the charging port of your vehicle.

Turning It On

1. When unit is connected to your vehicle, the device will automatically turn on when the vehicle is turned on
2. If it is not connected to your vehicle press and hold the power button until the blue indicator light turns on. The blue indicator is on when the device is on.

Recording Video

1. The device automatically starts recording video once it is turned on.
2. To stop recording, press the REC button.

Taking Photos

1. Press the mode button once to enter photo mode.
2. Press the REC button to take a picture.

Voice Recording

1. Press the mode button twice to enter voice recording mode.
2. Press the REC button.
3. Press the REC button again to stop recording.

Previewing/Deleting Media Files

1. Press the mode button three times to enter preview mode.
2. Press the up/down keys to rewind or go forward.
 - Press the REC button to watch videos
3. Press the menu button to delete your video or photo.
 - Press the REC button to choose the delete option.
Select Delete One or Delete All By pressing the REC button.
Press the down button to choose "OK" and delete the file.

Motion Detection

When Motion Detection is on the device automatically pauses video recording 20 seconds after the vehicle stops moving, and automatically resumes recording when the vehicle starts to move.

1. To turn on, press the menu button once. Press the down button until you reach the Motion Detect option. Push REC.

Date & Time

In standby mode press the MENU button twice, then scroll DOWN to where it says "DATE INPUT" and press REC. Then enter the correct date and time. When you are finished, press MENU to save the setting.

[Note] In order to effectively record the date and time of the traffic accident, please set the correct time before using.

Cycle Recording

Automatic seamless video recording records in a loop to use the storage efficiently, with the earliest unlocked video clips being overwritten when the storage card's maximal capacity is reached.

Video clips can be set to a length of 1, 3, and 5 minutes.

1. Press the menu button, go to Video Time.

You can then set it for the desired time.

Languages

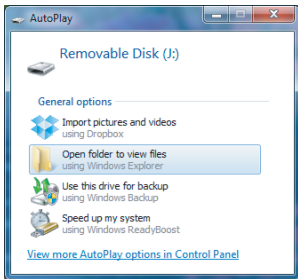
The Rear View Mirror Dash Cam is user friendly with multiple languages and several easy to press buttons. Supported user interface languages are:

English, Chinese, Italian, Spanish, Portuguese, German, French, Russian, Japanese, Korean.

1. Press the menu button twice. Go to Language. You can then set it for the desired language.

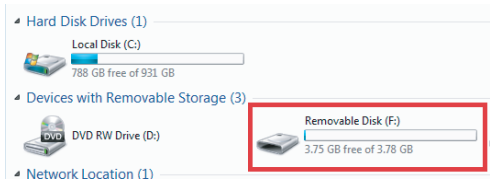
Transfer the Files to Your PC

1. Plug the Rear View Mirror Dash Camera into your PC using the USB cable or remove the Micro SD Card and insert it into the Micro SD Card slot on your computer
2. Locate "Removable Disk" inside the (My) Computer folder. Then click on "Open folder to view files"



for another way to access your video files go to the next page.....

1. Go to Start > Computer > Removable Disk



A screenshot of the Windows 'Computer' window. The window is divided into three sections: 'Hard Disk Drives (1)', 'Devices with Removable Storage (3)', and 'Network Location (1)'. Under 'Hard Disk Drives (1)', there is an icon of a hard drive and a bar chart for 'Local Disk (C:)' showing '788 GB free of 931 GB'. Under 'Devices with Removable Storage (3)', there is an icon of a DVD drive for 'DVD RW Drive (D:)' and an icon of a removable disk for 'Removable Disk (F:)' showing '3.75 GB free of 3.78 GB'. The 'Removable Disk (F:)' section is highlighted with a red rectangular border.

- Hard Disk Drives (1)
 - Local Disk (C:)
788 GB free of 931 GB
- Devices with Removable Storage (3)
 - DVD RW Drive (D:)
 - Removable Disk (F:)
3.75 GB free of 3.78 GB
- Network Location (1)

2. Open the Removable Disk drive.

3. Open the RECORD folder.

4. Double click the file you want to view.

[Note] VLC Player is recommended for watching videos

Trouble Shooting

THE DEVICE WON'T TURN ON

- Charge the device for at least 4 hours before the first use.
- Make sure the charging cable is securely inserted into the device and into the power source.

THE DEVICE ISN'T CHARGING

- Replace charging cable or email us for assistance at help@smartpointco.com

THE DEVICE HAS CRASHED

- You need to reset the device.

MY COMPUTER DOESN'T RECOGNIZE THE DEVICE

- Unplug the device from your PC and reboot the device.
- Unplug the device from your PC and reboot your PC.
- Try using a different USB slot on your PC.
- Replace the USB cable.

THE SOUND OR VIDEO IS UNCLEAR

- The device needs charging.

OTHER PROBLEMS

- Email us at help@smartpointco.com

Installation

Simply place the Rear View Mirror Dash Cam over your existing rear view mirror.

Place the rubber holder over the back of the mirror. Connect the holder into the bottom hook to hold the Rear View Mirror Dash Cam in place.

You can then use the Rear View Mirror Dash Cam as your regular rear view mirror and access the screen and buttons.

